

PLAY IS THE



ROAD

to childhood
happiness
and adult
brilliance

PLAY
is the highest
FORM OF
RESEARCH

Albert Einstein

Welcome Meeting

Holy Trinity C of E Primary School



NAME

EVERYTHING!!





Key Staff

Mr David Le Templier - Head Teacher

Mrs Lynda Britton - Deputy Head Teacher

Mrs Becky Hall - Inclusion Lead

Mrs Pat Nelson - Pastoral Support Lead



Reception Staff

Miss Fran Mitchell - Class Teacher

Miss Charlie Horsey - Teaching Assistant

Mrs Dean, Mrs Hajra and Mrs Childs additional TAs

Stay and Play Sessions

	Tues 25th June 1 Parent stay	Tues 2nd July	Tues 9th July
9.30 – 10.30	Group A	Group A	Group A
10.30 – 11.30	Group B	Group B	Group B

The children will have three, one hour long sessions in the Reception class to explore the environment and develop relationships with the Reception staff.

Phased School Entry

The children will have a phased entry to school. This allows all the children settle into school regardless of their preschool experience. We will also use this time to get to know your child and the things they enjoy.

Week Beginning	AM	PM
Week 1: 2th – 6th Sept	Home Visits (Miss Mitchell and Miss Horsey)	
Week 2 – 9th September	Group A (8.45am – 11.30am)	Group B (12.30 – 15.15pm)
Week 3 – 16th September	All children in until 1pm (including lunchtime)	
Week 4 – 23rd September	All Children Full Time	

Your child may continue on a part time timetable for longer if needed, this will be discussed on an individual basis

First Day of School

- You will bring your child to the Reception Outdoor Area if your child is in Group A
- Group B children will be brought to the main office at 12.30pm, where the Reception team will greet them.
- Upset Children - we will comfort them and find an activity that interests them.
- Hang coat and put water bottle away
- Put book bag in box
- Wash hands
- Sit on carpet ready for registration

Tapestry – online learning journey

- We use Tapestry (an online Learning Journey) as a way to share your child's learning with you and to assess the progress that they are making.
- You will receive a notification when an observation has been posted
- You are able to upload observations from home which allows for us to create a picture of your child as a whole
- You can download the Tapestry App on your phone / tablet for easy access.

Communication and Language	Listening, Attention and Understanding
	Speaking
Personal, Social and Emotional Development	Self – Regulation
	Managing Self
	Building Relationships
Physical Development	Gross Motor Skills
	Fine Motor Skills

← Prime Areas

Literacy	Comprehension
	Word Reading
	Writing
Mathematics	Number
	Numeral Patterns
Understanding the World	Past and Present
	People, Culture and Communities
	The Natural World
Expressive Arts and Design	Creating with Materials
	Being Imaginative and Expressive

Specific Areas →

Learning through Play

- Our curriculum is structured by New Early Years Foundation Stage Curriculum. It is split into Prime and Specific Areas of Learning.
- Prime Areas underpin children learning and provide the skills to help them achieve the Specific Areas
- Our learning is a mix of focussed teacher led inputs, adult initiated play and child initiated continuous provision
- We will complete outdoor learning once a week when the children have become settled.

Assessment

- In the first few weeks of school your child will be assessed in all Areas of Learning. This will be done through play based activities.
- We will also complete the DfE Statutory Baseline which assesses maths and literacy.
- Throughout the year your child will be assessed across the curriculum, including in Phonics and Maths
- *If you have any concerns about your child's development these can be shared with Miss Mitchell or Mrs Hall (Inclusion Lead)*

Behaviour

A church school community aspiring for all to live life to the full

Community

Love

Love your neighbour as yourself

Mark 12:31

We are caring and supporting of one another and value everybody for who they are

Aspiration

Courage

One body, many parts

1 Corinthians 12:14-20

We believe in each person's unique gifts and talents and potential to flourish

Flourish

Wisdom

Live life to the full

John 10:10

We are seeking to be rich in knowledge, character and spirit



VISION
JANUARY 2024

Behaviour

Our School Behaviour expectations are: Kind, Safe, Best

Be Kind (and respectful)

of others' property

of others' beliefs and religion

of others' culture

of others' efforts and abilities

Do our best

to learn

to help

Be Safe

by helping to maintain a clean and tidy environment

by following instructions for this purpose

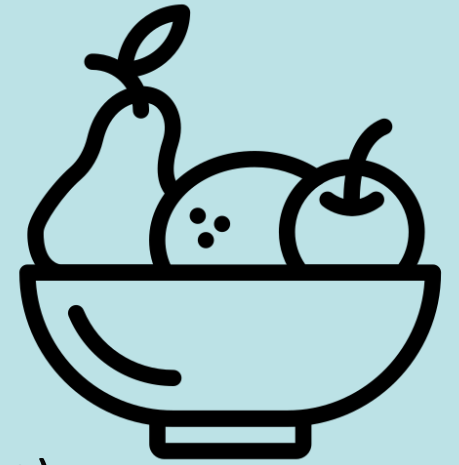
by looking out for others

by reporting incidents and events that make you, or others, feel uncomfortable, hurt or unsafe

OPAL Play

- OPAL (Outdoor Play And Learning) is a national initiative that our school has recently joined. OPAL aims to enhance the children's outdoor lunchtime experience.
- We currently have various zones that the children can choose between such as Art and Craft Zone, Wheeled Toys Zone, Drama Zone, Mud Kitchen and Balls and Play Equipment Zone.
- We have trained OPAL Play Leaders who supervise and support the play outside. Parents and Carers can be involved by donating various items to support the play and learning.
- We are also planning to hold "Stay and Play" sessions for families to join in with the fun!

Snack and Lunch



- A piece of fruit is provided everyday
- Children can bring in their own healthy snack (fruit, cheese or yoghurt)
- Milk needs to be ordered through 'Cool Milk'
- Children get free milk until week before they turn 5
- Lunch
 - Hot Dinners (Main, Vegetarian or Baguette / Jacket Potato)
 - Home packed lunch
- Your child needs a named water bottle so they can regularly access water.

Uniform

- Black Velcro Shoes - Low heel and NO open toes
- Burgundy School jumper or Cardigan
- Blue polo shirts
- Grey elasticated trousers / skirts
- No jewellery – only stud earrings
- Please tie back long hair
- PE kit stays at school and regularly sent home
- House t – shirt with navy / black shorts / joggers for winter
- Earrings
 - *Leave out on PE days*
 - *Cover with Mircopore Tape*
- School wellington boots (named!)

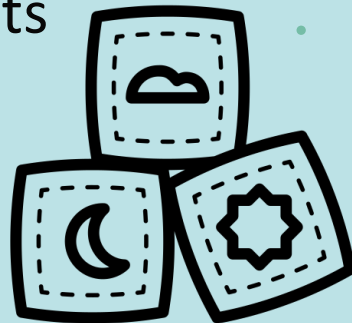
NAME

EVERYTHING!!



Encouraging Independence

- Recognise first name
- Put on coat and do it up
- Get dressed without help
- Turn clothes in the right way
- Tidy away toys
- Make their needs know to adults
- Wash hands
- Go to the toilet independently
- Ask to go to the toilet
- Don't worry if they have a toilet accident in the first few weeks
- Expose children to Hand Dryers!
- Put spare pants, socks, trousers in PE bag.



A Positive Start

- Be organised and include your child in getting things ready for school
- Talk about what to expect at school but do not add extra pressure
- Reassure your child that you'll return at the end of the day
- Make sure they get lots of sleep – they will be exhausted!!
- Be on time for collection
- Let them make friends
- Visit <https://www.bbc.co.uk/tiny-happy-people> for more advice on starting school

Wrap around childcare

- All sessions will be booked and paid for through Parent Pay once the children are in full time
- ParentPay accounts will be created when the children start full time in September – this will need to be activated
- It is recommended that Reception do not do breakfast club / afterschool club in their first week of school
- From 16th September they may do breakfast if needed.
- Please contact Miss Horsey if you need more information about wrap around care

Wrap around childcare

- All sessions will be booked and paid for through Parent Pay once the children are in full time
- ParentPay accounts will be created when the children start full time in September – this will need to be activated
- It is recommended that Reception do not do breakfast club / afterschool club in their first week of school
- From 16th September they may do breakfast if needed.
- Please contact Miss Horsey if you need more information about wrap around care

Medical Information

Inhalers: named and kept in school

Complete medical forms (Allergies, food intolerances, medical conditions)

If your child needs medicine administered regularly this needs to be discuss with school staff

If your child has sickness / diarrhoea please keep at home for **48 hours after** last bout of sickness



SEND at Holy Trinity

Four areas of SEND:

- Communication & Interaction
- Cognition & Learning
- Social, Emotional and Mental Health needs
- Physical & Sensory

How does Holy Trinity Primary School know if children need extra support?

- Concerns can be raised by parents, teachers or other school staff
- Pupil progress meetings are held three times a year between the SENCO and class teachers to discuss each child.
- Pastoral support may be offered from our pastoral support team.
- External services may be accessed e.g. The advisory teaching service, S&L, School Nurse etc.
- If your child needs additional support, we may suggest they move onto a My Plan and individual targets will be set for them to work towards. These are reviewed three times a year.

- Any concerns, please talk to us, we have an open-door policy and are happy to help.

Information Pack

Please complete all the digital forms asap

Make sure the office have a copy of your child's Birth Certificate

FSM are different to Universal Free School Meals allows school to get more funding to
support children